



# 27 - 29

## HARLEY STREET

M A R Y L E B O N E W 1

### Lower Ground Floor

2,923 sq ft / 271.55 sq m

### Lower Ground Storage

177 sq ft / 16.44 sq m

### Live Loading Key

3.0kN/m<sup>2</sup>

4.0kN/m<sup>2</sup>

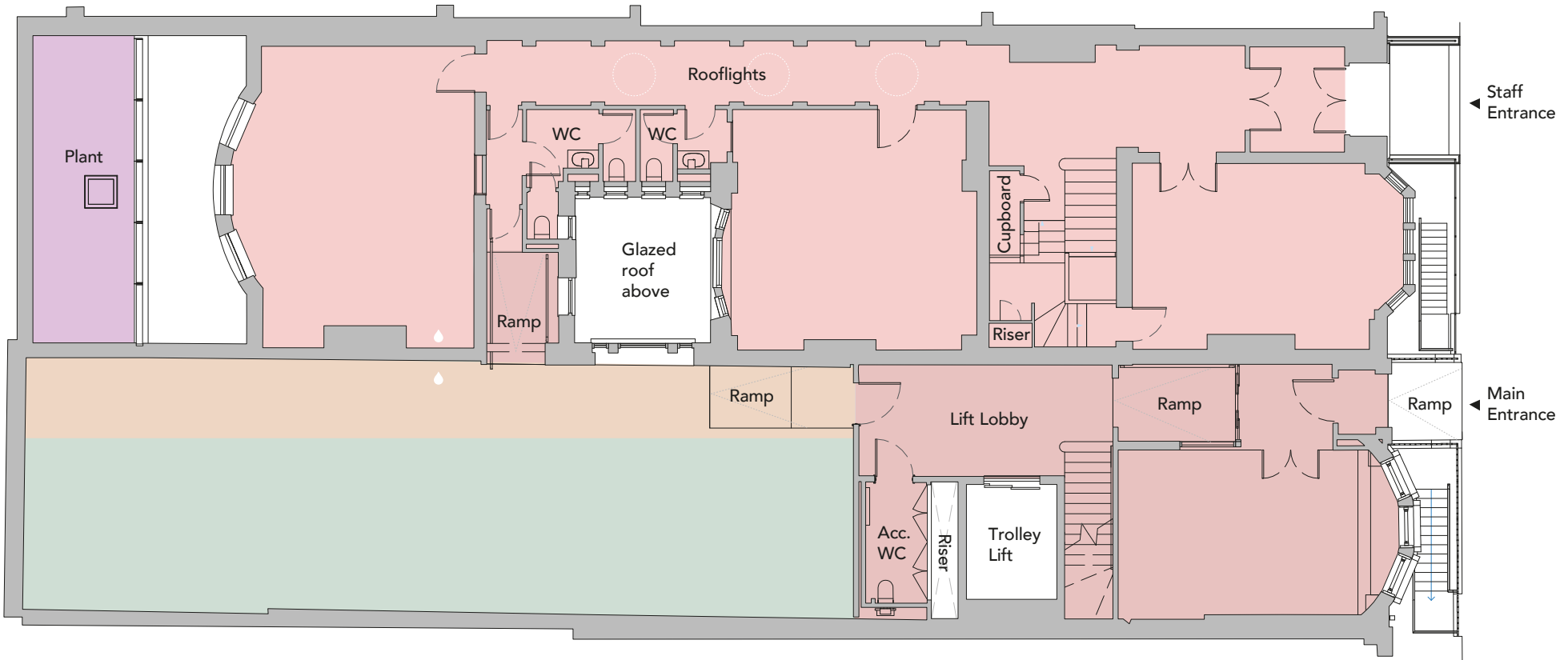
7.5kN/m<sup>2</sup>

37.50kN/m<sup>2</sup>

NOTE: all areas are approximate and will be verified on completion in accordance with RICS Code of Measuring Practice.

◆ Capped Off Services; Water Supply And Drainage

[27-29harleystreet.co.uk](http://27-29harleystreet.co.uk)



# 27 - 29

## HARLEY STREET

MARYLEBONE W1

### Ground Floor

2,712 sq ft / 251.90 sq m

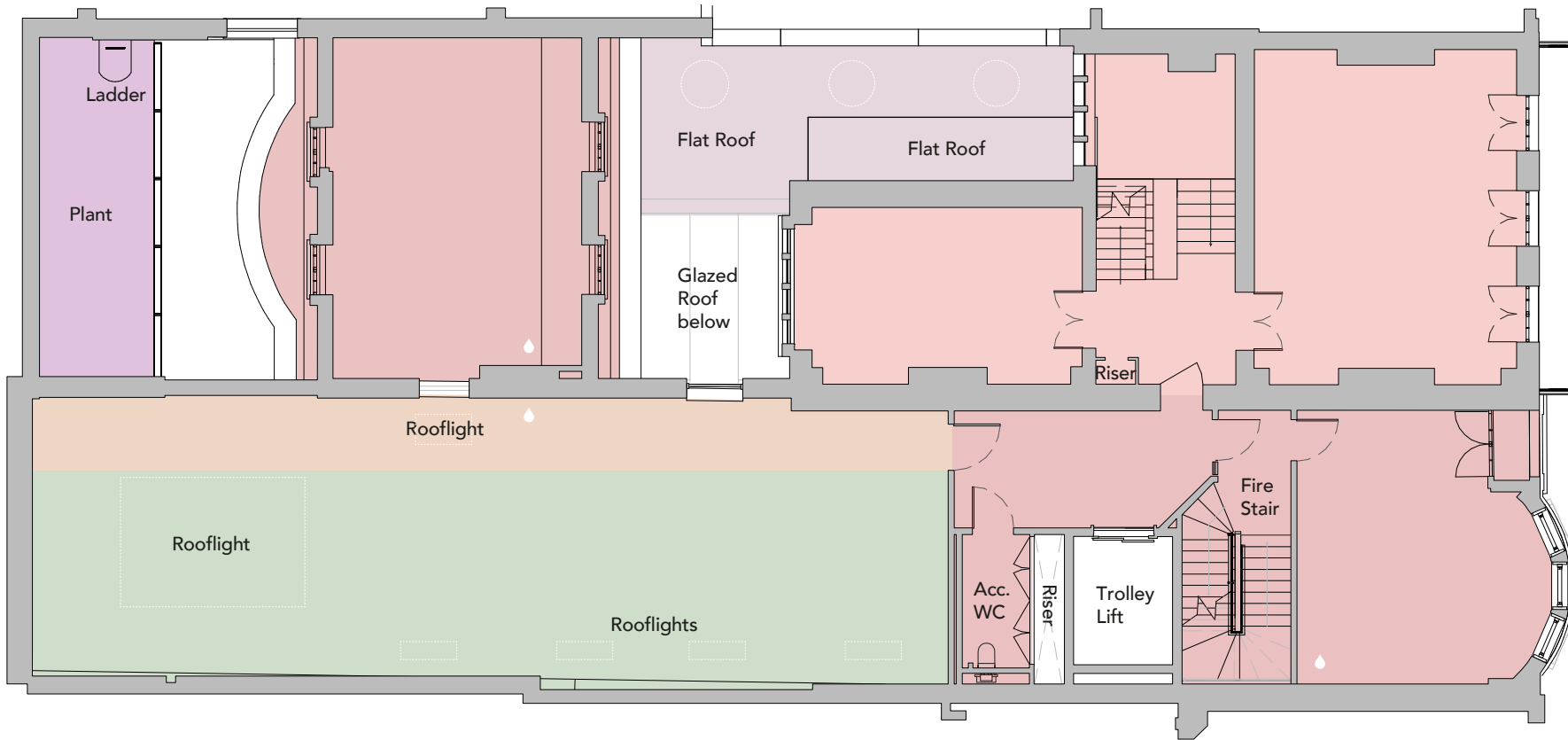
NOTE: all areas are approximate and will be verified on completion in accordance with RICS Code of Measuring Practice.

◆ Capped Off Services; Water Supply And Drainage

### Live Loading Key

- 2.5kN/m2
- 3.0kN/m2
- 4.0kN/m2
- Area considered with 1 No. MRI scanner per bay to max load of 8014kg

[27-29harleystreet.co.uk](http://27-29harleystreet.co.uk)



# 27 - 29

## HARLEY STREET

MARYLEBONE W1

### First Floor

2,795 sq ft / 259.60 sq m

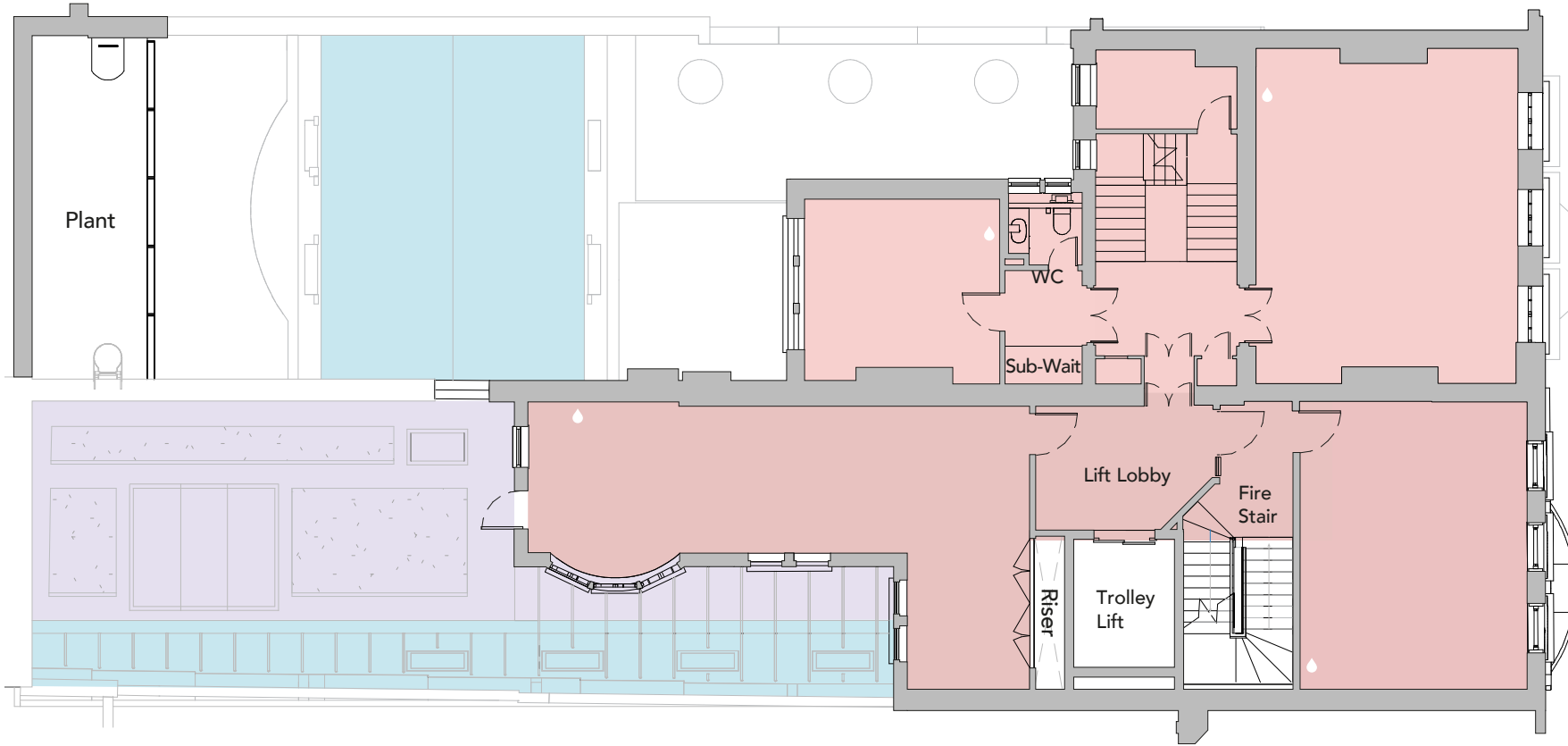
*NOTE: all areas are approximate and will be verified on completion in accordance with RICS Code of Measuring Practice.*

◆ Capped Off Services; Water Supply And Drainage

### Live Loading Key

- 0.75kN/m<sup>2</sup>
- 2.5kN/m<sup>2</sup>
- 2.5 kN/m<sup>2</sup>
- 3.5kN/m<sup>2</sup>
- Area considered with 1 No. CT scanner per bay to max load of 4720kg

[27-29harleystreet.co.uk](http://27-29harleystreet.co.uk)



# 27 - 29

HARLEY STREET

MARYLEBONE W1

## Live Loading Key

0.6kN/m<sup>2</sup>

0.75kN/m<sup>2</sup>

3.5kN/m<sup>2</sup>

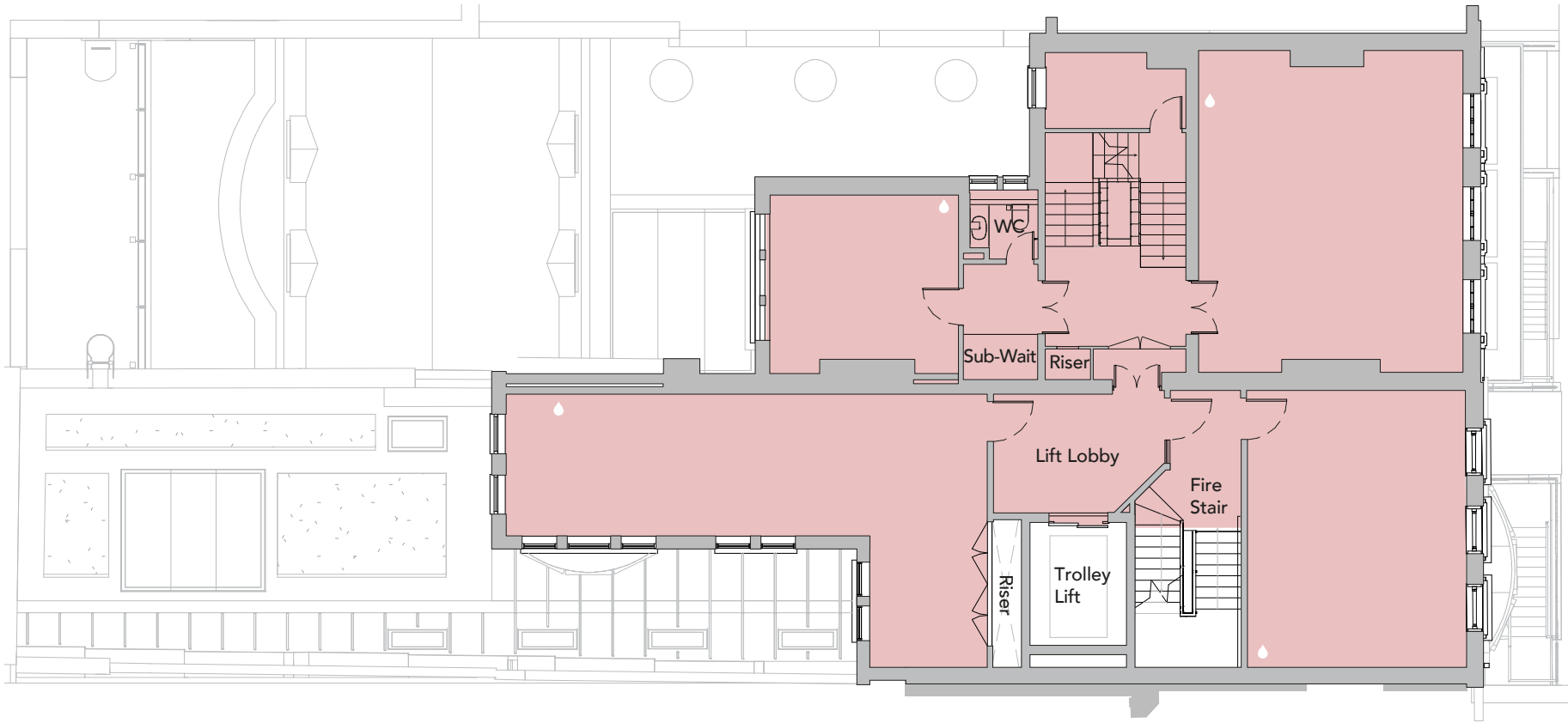
## Second Floor

1,449 sq ft / 134.60 sq m

NOTE: all areas are approximate and will be verified on completion in accordance with RICS Code of Measuring Practice.

◆ Capped Off Services; Water Supply And Drainage

[27-29harleystreet.co.uk](http://27-29harleystreet.co.uk)



# 27 - 29

HARLEY STREET

MARYLEBONE W1

## Third Floor

1,474 sq ft / 136.90 sq m

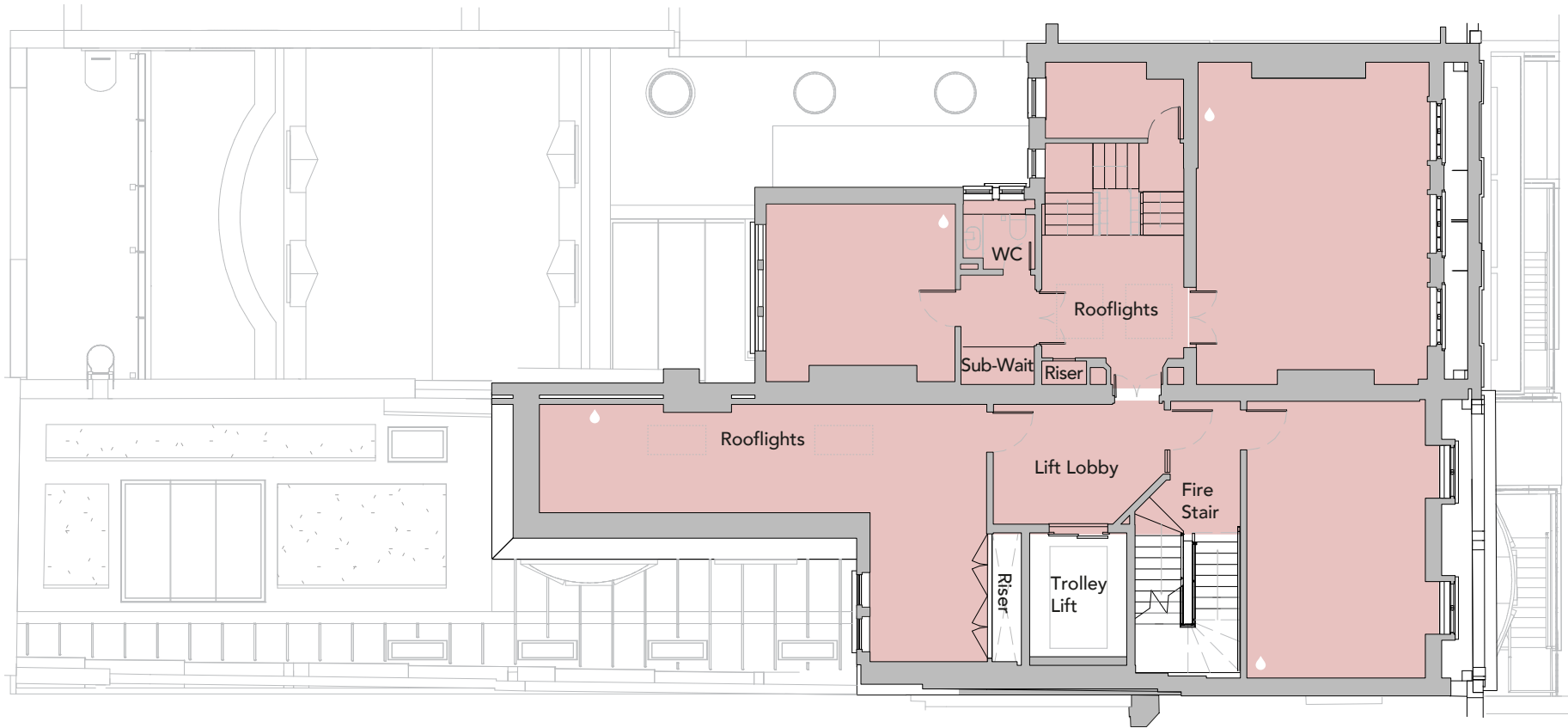
## Live Loading Key

○ 3.5kN/m<sup>2</sup>

*NOTE: all areas are approximate and will be verified on completion in accordance with RICS Code of Measuring Practice.*

◆ Capped Off Services; Water Supply And Drainage

[27-29harleystreet.co.uk](http://27-29harleystreet.co.uk)



# 27 - 29

HARLEY STREET

MARYLEBONE W1

## Fourth Floor

1,242 sq ft / 115.50 sq m

## Live Loading Key

○ 3.5kN/m<sup>2</sup>

NOTE: all areas are approximate and will be verified on completion in accordance with RICS Code of Measuring Practice.

◆ Capped Off Services; Water Supply And Drainage

[27-29harleystreet.co.uk](http://27-29harleystreet.co.uk)