



## Lower Ground Floor

2,923 sq ft / 271.55 sq m

## Lower Ground Storage

177 sq ft / 16.44 sq m

*NOTE: all areas are approximate and will be verified on completion in accordance with RICS Code of Measuring Practice.*

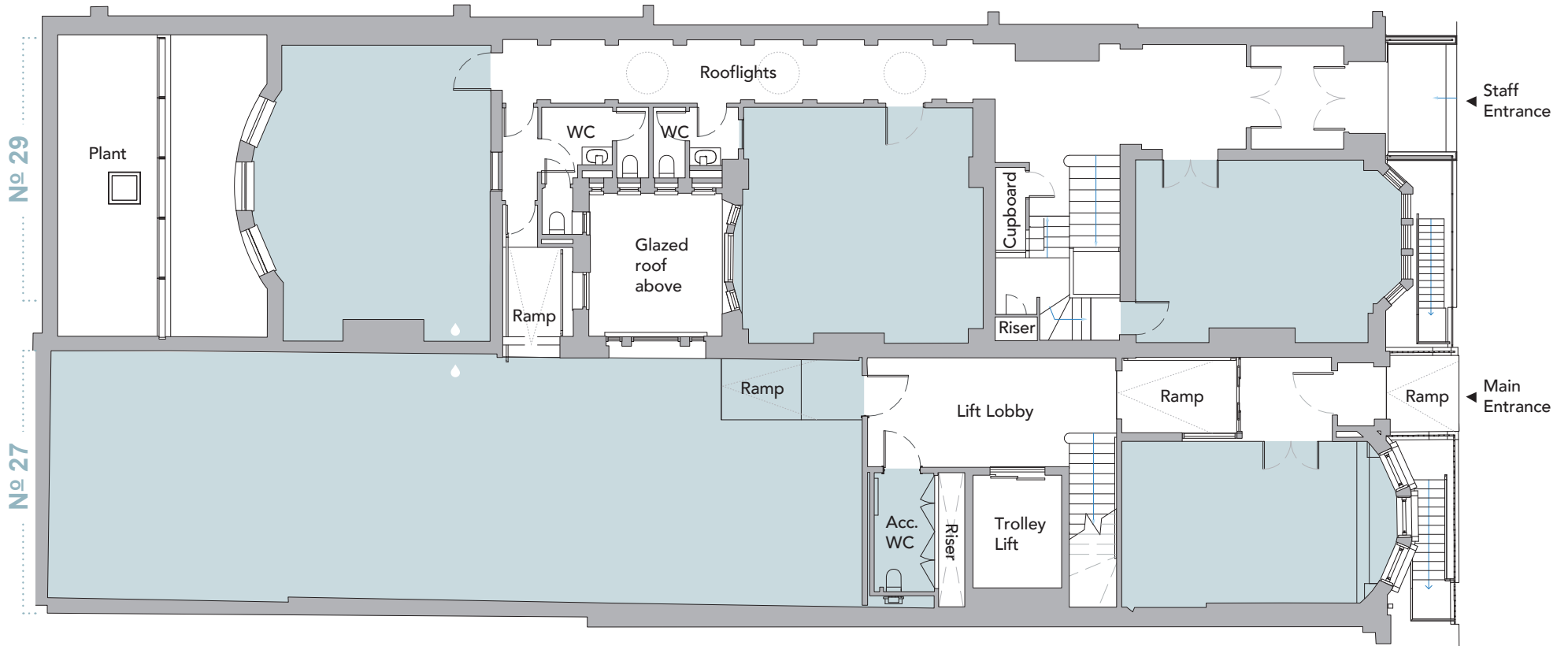
💧 Capped Off Services; Water Supply and Drainage

[27-29harleystreet.co.uk](http://27-29harleystreet.co.uk)

# 27 - 29

## HARLEY STREET

M A R Y L E B O N E W 1



## Ground Floor

2,712 sq ft / 251.90 sq m

*NOTE: all areas are approximate and will be verified on completion in accordance with RICS Code of Measuring Practice.*

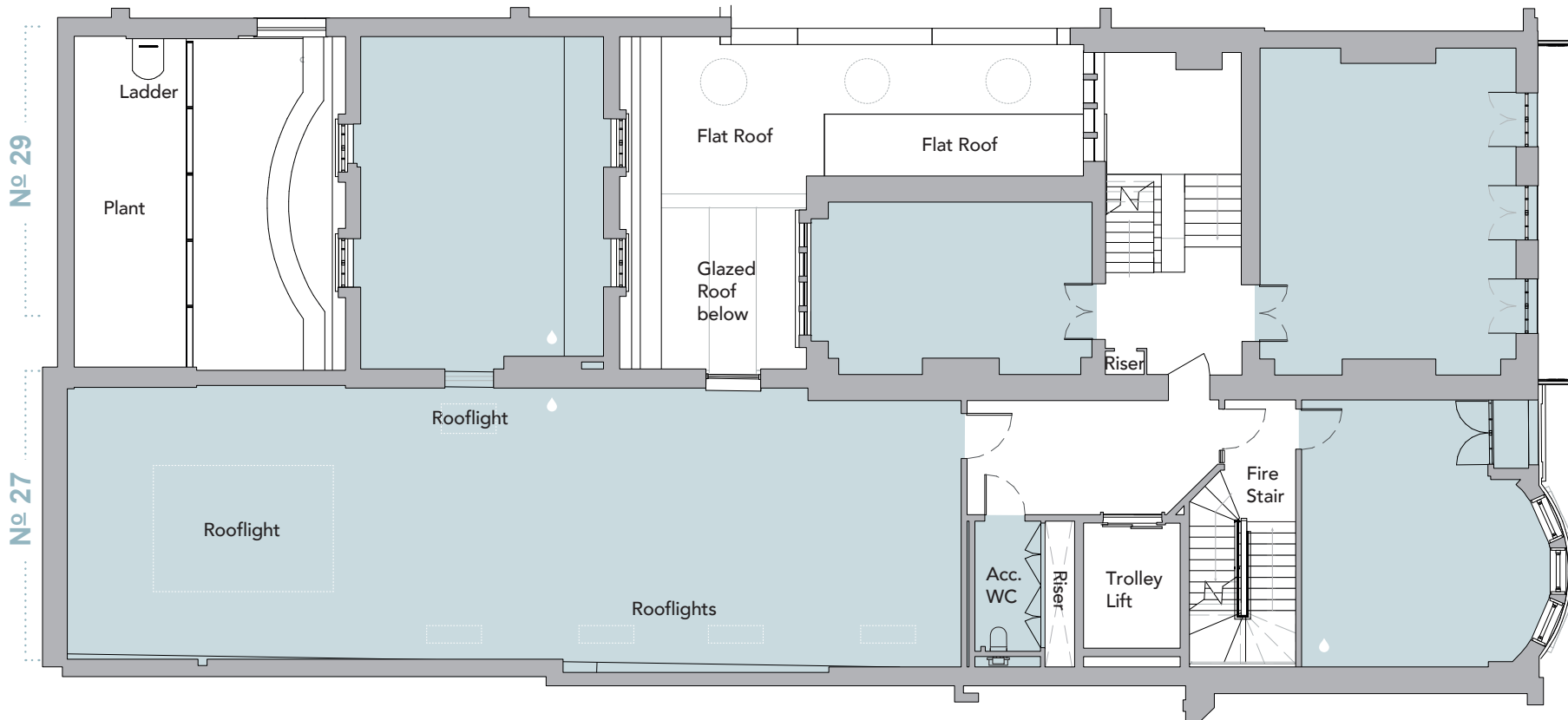
💧 Capped Off Services; Water Supply and Drainage

[27-29harleystreet.co.uk](http://27-29harleystreet.co.uk)

# 27 - 29

## HARLEY STREET

M A R Y L E B O N E W 1



## First Floor

2,795 sq ft / 259.60 sq m

*NOTE: all areas are approximate and will be verified on completion in accordance with RICS Code of Measuring Practice.*

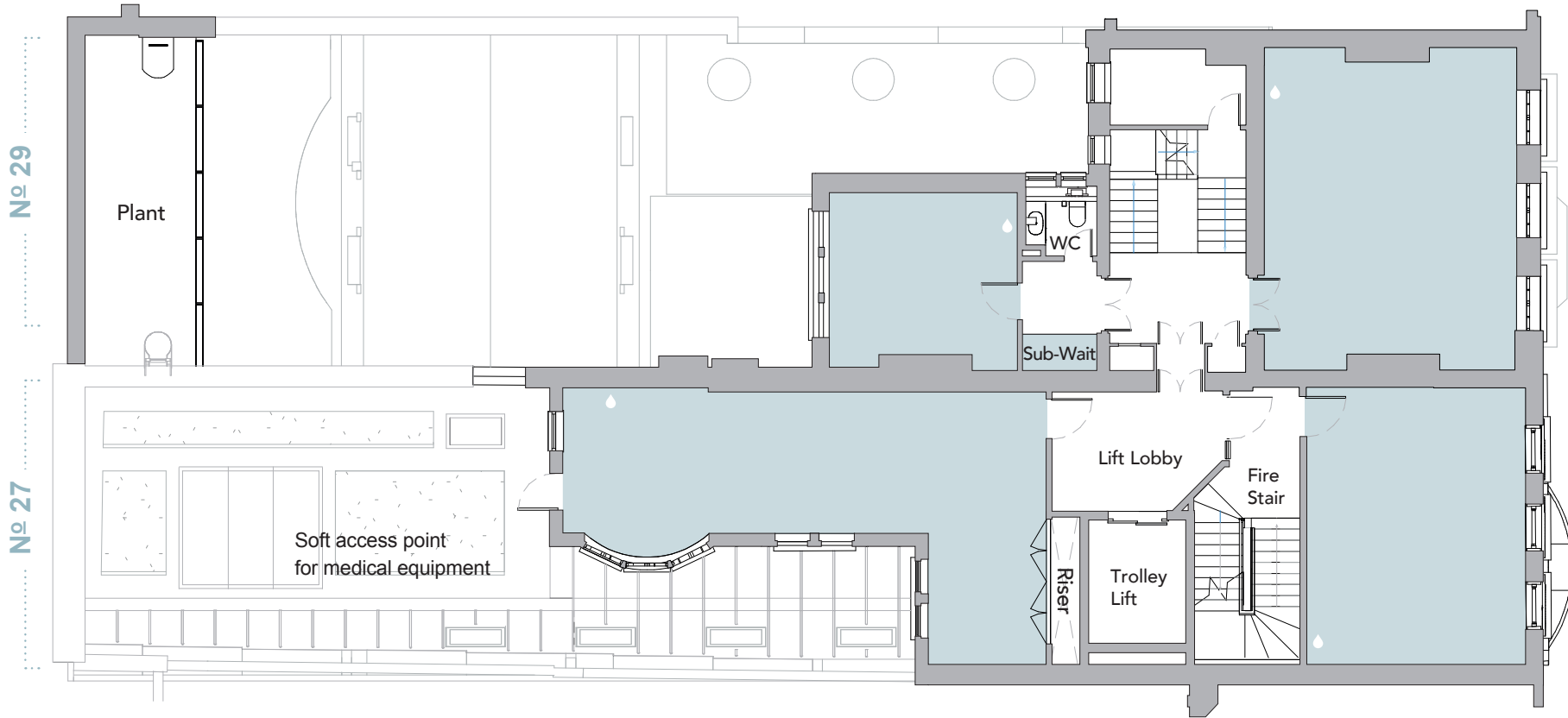
💧 Capped Off Services; Water Supply and Drainage

[27-29harleystreet.co.uk](http://27-29harleystreet.co.uk)

# 27 - 29

## HARLEY STREET

M A R Y L E B O N E W 1



## Second Floor

1,449 sq ft / 134.60 sq m

*NOTE: all areas are approximate and will be verified on completion in accordance with RICS Code of Measuring Practice.*

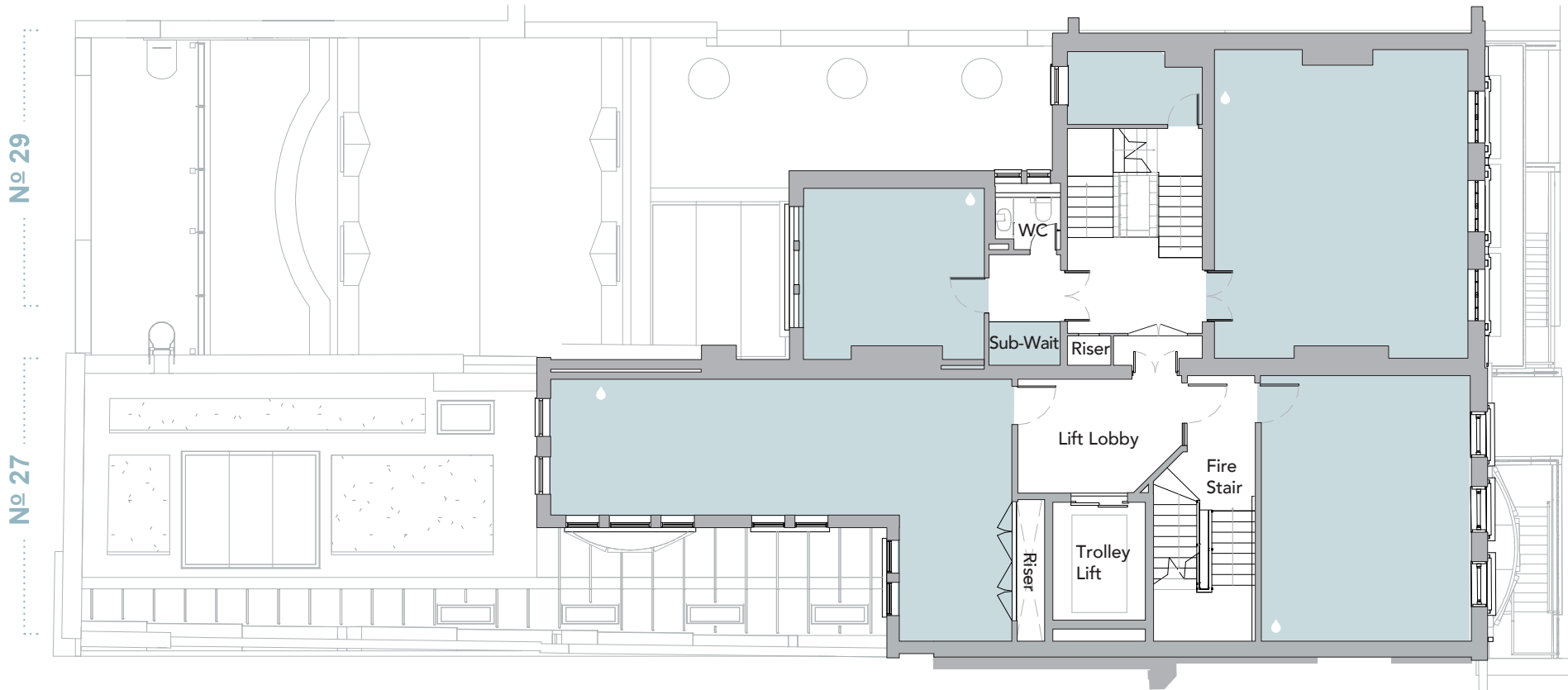
💧 Capped Off Services; Water Supply and Drainage

[27-29harleystreet.co.uk](http://27-29harleystreet.co.uk)

# 27 - 29

## HARLEY STREET

M A R Y L E B O N E W 1



## Third Floor

1,474 sq ft / 136.90 sq m

*NOTE: all areas are approximate and will be verified on completion in accordance with RICS Code of Measuring Practice.*

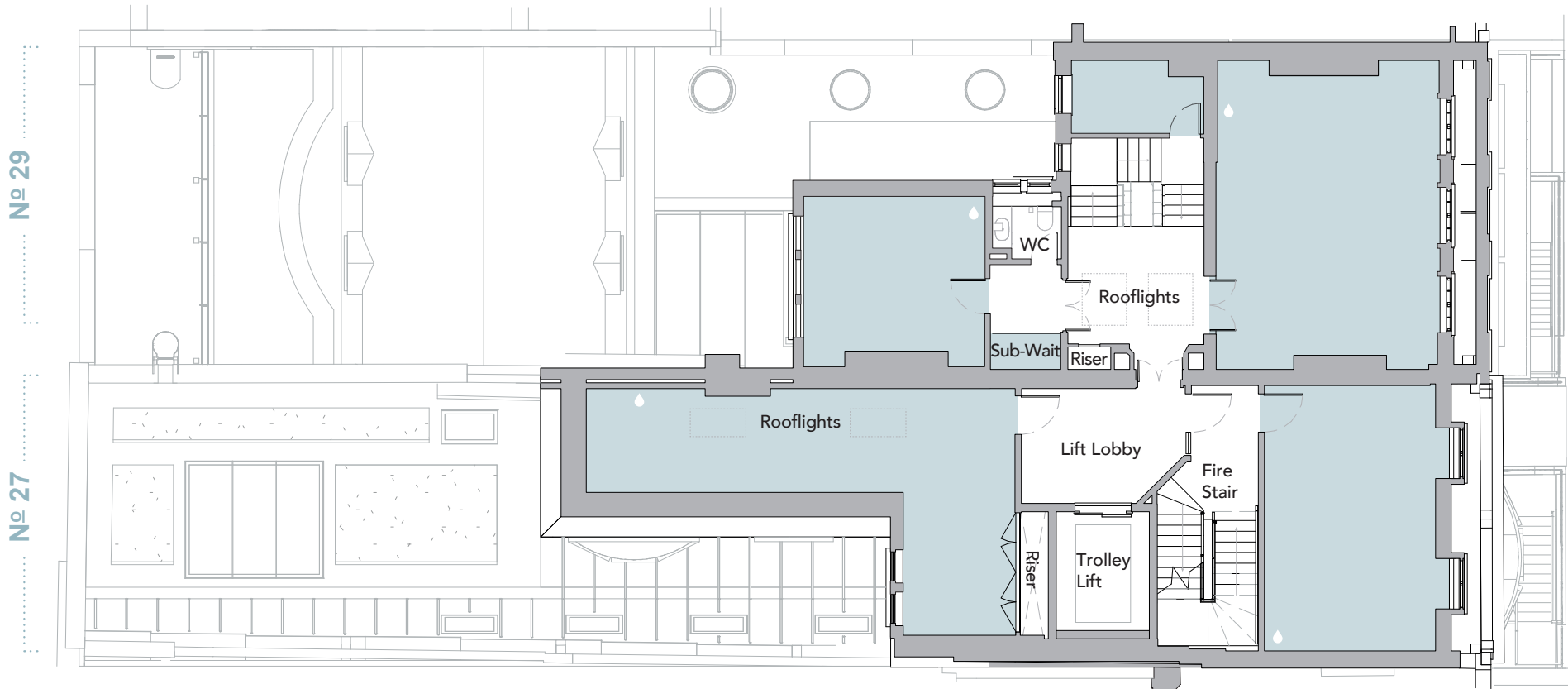
💧 Capped Off Services; Water Supply and Drainage

[27-29harleystreet.co.uk](http://27-29harleystreet.co.uk)

# 27 - 29

## HARLEY STREET

M A R Y L E B O N E W 1



## Fourth Floor

1,242 sq ft / 115.50 sq m

*NOTE: all areas are approximate and will be verified on completion in accordance with RICS Code of Measuring Practice.*

💧 Capped Off Services; Water Supply and Drainage

[27-29harleystreet.co.uk](http://27-29harleystreet.co.uk)

# 27 - 29

## HARLEY STREET

M A R Y L E B O N E W 1